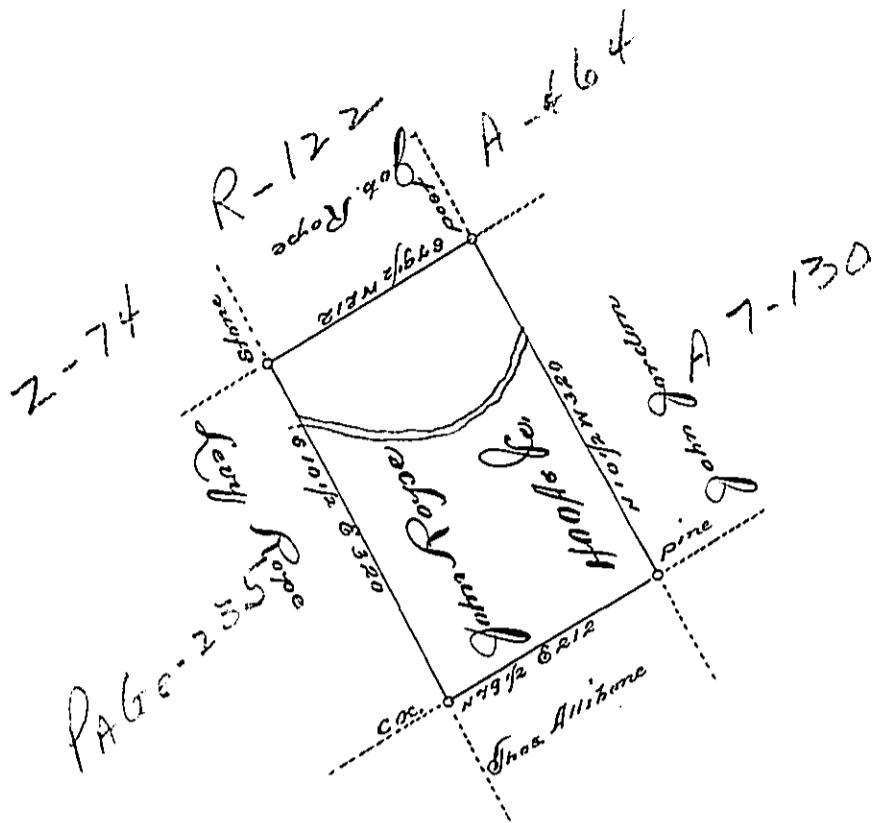


Hazle
Luzerne



A Draft of a tract of land Called Situate on the Black Creek in the County
of Northum Containing Four Hundred acres & Allors, Surveyed for John Rope the
fifth day of October 1793. by virtue of a warrant dated the 13th day of
June 1793.

by

Wm. Gray D. F.

To Daniel Brodhead Esq.
Surt. Gen!

IN TESTIMONY that the above is a copy of the original remaining on file in the
Department of Internal Affairs of Pennsylvania, made con-
formably to an Act of Assembly approved the 16th day of
February, 1833, I have hereunto set my Hand and caused
the Seal of said Department to be affixed at Harrisburg, this

sixth day of August, 1895,

James W. Latta
Secretary of Internal Affairs.